

Bullard Pipeline - Hill County, Texas

Scope of Work:

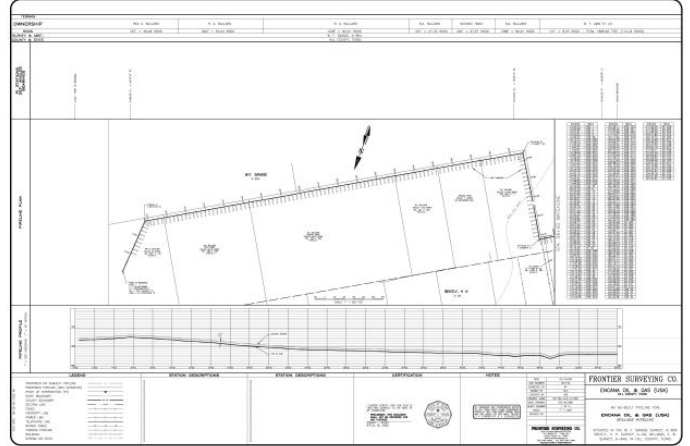
EnCana Oil and Gas (USA) Inc. employed Frontier Surveying to survey surface tracts, hazards, utilities, proposed pipeline route, and as-built survey for the Bullard pipeline in Hill County, Texas. This project involved 10 separate surface tracts and spanned 4 miles in length.

Size – 4 lineal miles **Cost** - \$95,000

Construction cost: \$12,000,000

Principal Elements and Special Features:

Warranty Deeds with metes and bounds descriptions were obtained from the Hill County Clerk's office and were used to create working sketches for locating the property boundaries of the various surface tracts the pipeline would cross. A centimeter level, survey-grade Global Positioning System was used in real-time Kinematic mode to locate and tie in property corners, hazards, utilities, and fences. The information from this initial survey was then used to resolve surface boundaries and plan a route for the proposed pipeline. The proposed pipeline was staked on the ground including permanent and temporary easements. Once this information was collected in the field, construction alignments, exhibit plats, and road profile permit plats were generated in CAD and were provided to the client. As the pipeline was being constructed, a field crew performed an as-built survey of the pipeline in order to document the pipeline's location, elevation, heat and x-ray numbers, and depth of cover.



Relevance:

This project demonstrates Frontier's ability to work in varied locations throughout the state and adhere to client specific requirements.